

GREAT LAKES DECORATIVE ARTISTS

May/June 2010



In This Issue

- Pg. 1 GLDA Officers
Calendar of Events
- Pg. 2 from the President/"Pot
Party"
- Pg. 3 from the Vice President
- Pg. 4 Secretary Notes
- Pg. 5 Education News
- Pg. 6 Sunshine/Kudo's
Directory Updates/New
Member Intro
- Pg. 7 Memory Boxes
- Pg. 8 Birthdays/Artist Spotlight
- Pg. 9 Turning Point
- Pg. 10 Village Painters/Shirley
Nan Ruchong seminar
- Pg. 11 March meeting photos
- Pg. 12 GLDA Membership app.



Got no reason...
Just "fillin' space"

GLDA 2010 OFFICERS

PRESIDENT

Alice Ochla 586-574-9264

VICE-PRESIDENT

Pat & Bob Buszczak 586-979-1149

SECRETARY

Christine Morrison 586-725-5616

TREASURER

Vicki Akins 586-977-6749

EDUCATION/SK BLDR.

Audrey Gusmano 586-465-2646

Barbara Miller 586-979-5892

NEWSLETTER

Mary Bobrowski 248-375-5539

MEMBERSHIP

Pat Anderson 586-784-9629

BOARDMEMBERS

Jean Carter 248-379-1781

Pat Ehnis 586-286-5011

Tess Missant 586-786-9234

Bonnie Schott 248-853-3980

Jan Heins 586-775-1179

(past-president)

APPOINTED POSITIONS

SUNSHINE

Fern Ameel 810-326-0965

HISTORIAN

Alice Ochla 586-574-9264

WEBMASTER

Mary Bobrowski 248-375-5539



Calendar of Events

2010

- May 13 – GLDA gen'l mtg,
Memory Box Paint-in
- May 18-22 – SDP Convention
Wichita, KS
- July 17 – GLDA gen'l mtg,
Pot Party Raffle, After Mtg
Paint-in w/Judy Ribitch
- Aug 9-14 – HOOT Convention
Columbus, OH
- Sept 18 – GLDA gen'l mtg,
Elections
- Nov ___ - GLDA Christmas Dinner



Message from your President



Hello Everyone,

Hope everyone enjoyed the after meeting painting with Mary Bobrowski at the last March meeting. Thank you Mary. It's always fun to paint with friends, and the bags came out so cute and useful too.

Some of us painted paver bricks a couple of weeks ago as fund raisers for The National Cancer Society. Sam Farah was in charge of the project and she did a great job. Everyone enjoyed the very organized and productive group painting which resulted in a very profitable fund raiser. Great job, Sam!!

Now that the weather is getting nicer it might be more difficult to find that extra time to paint, but with a little planning, it can be done. This Saturday, April 24th is the Michigan Mixer in Flint with Valley Tole. Hope to see some familiar faces there. In May, I will be going to our National Convention in Wichita where I plan to paint with some great teachers, but also get a chance to talk to and compare notes with other chapter presidents from around the country. I'll report on that in July.

Our after meeting activity for this May will be our memory box painting. We are planning to have three teachers doing three box patterns so hope everyone can stay and participate in this very meaningful project. From the letters we sometimes get, it does mean so much to the parents who get these boxes, so please plan to stay and paint.

Hope to see you all at this May 15th meeting for laughter, friendship and painting.

Sincerely,

Alice



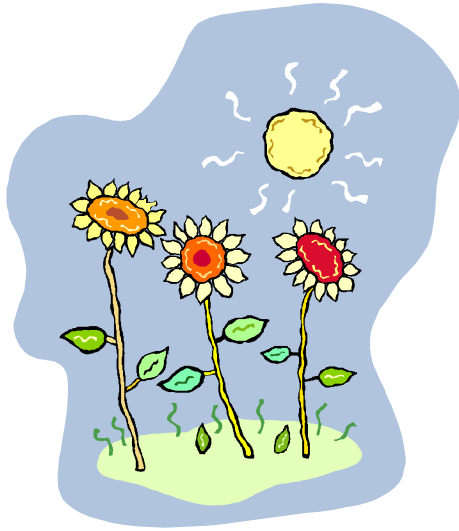
*** Board Meeting, Monday, June 26, 2010 7pm at Audrey Gusmano's house ***

It's official !!! We're having another "POT PARTY"

raffle at the July meeting. The theme for this year is "live plants". Please paint an 8 or 10 inch terra cotta pot, with saucer and complement it with a live plant – it could be a plant for outside, a house plant, an herb plant, whatever your preference. So put on your painting hat and get out your green thumb and paint a "plethora of perky posies".



AND FOR FUN..... We will also be painting wine bottles (taught by Judy R) after the meeting, it was mentioned at the March meeting that we will be having a "wine & pot party" tee hee.... So, let's have a throwback to the 60's JFor the fun, if you'd like to dress in your finest 60's attire, a la hippie style for a pot & wine party, please show us your finest at the July meeting J



GLDA MAY GENERAL MEETING May 15, 2010

LOCATION: THE TABERNACLE CHURCH
14205 12 MILE ROAD
WARREN, MI 48093

COFFEE: 9:30 AM
MEETING BEGINS: 10:00 AM

MAY HOSTESSES ARE: Kathy Ziembra, Pat Ehnis and Pat Anderson. Thank you, ladies.

Our Celebrity Raffle for this month is a lovely piece painted by our own Mary Wiseman. As usual, Mary did a beautiful job and I'm looking forward to winning it. Thanks, Mary.

What a great time we had playing Bingo at the March meeting. Lots of fun and nice prizes. Sandy, you did a wonderful job and we appreciate all your hard work.

Don't forget we are painting Memory Boxes at our May meeting. Look for some nice patterns being presented by our teachers Mary Wiseman, Bonnie Schott and Judy Ribitch.

What a fun time we had at Sam's house painting pavers for the American Cancer Society Relay for Life fundraiser. We worked hard and enjoyed every minute of it. Thank you, Sam, for the wonderful lunch that was provided for us.

Bob and I are looking forward to meeting this Saturday, April 17th with all our friends at the Mt. Clemens Library. I hope many of you will take advantage of this opportunity to join friends (and make new ones) while you spend a day of casual painting and yakking. Audrey has worked hard setting up these dates for us and we want to show our appreciation by showing up.

Don't forget your badges and a dish to pass for lunch.

See you there.
Bob & Pat Buszczak
Vice-Presidents

For the July After Meeting
Paint-In, Judy will need to
know if you are planning to stay
and paint so that she will have
enough bottles & paint on hand

Cost - \$ 5.00 for bottle & paints



Things to bring to the May meeting:

- Small lunch dish (no breakfast)
- Name Badge
- Show & Tell
- Memory Box
- Painting supplies to stay & paint

SECRETARY NOTES ~~~~ GLDA General Meeting March 12, 2010

Respectfully submitted by Secretary Chris Morrison

Meeting called to order at 10:05 by President Alice Ochla
Vice President Pat Buszczak led membership in prayer.
Minutes approved as published in newsletter.

VICE PRESIDENT'S REPORT

Given by Vice President Pat Buszczak.
Pat sent a sign up list around for the memory box paint in after the May meeting.
July's after meeting paint in will be a painted wine bottle taught by Judy Ribitch.
July will be a "Pot Party"/ Members are asked to paint a 8 or 10 " flowerpot and put a plant in it to be raffled off at the meeting. Members may dress accordingly, if they choose for a pot party.

TREASURER'S REPORT

Given by Vicki Akins.
Checking: \$2,674.80
Savings: \$5,611.12
TOTAL: \$8,285.92

MEMBERSHIP

Given by Pat Anderson.
Membership is presently at 67.
Sam Farah has designed a Thank You card to be sent to new members so they will feel more welcome.

EDUCATION/SKILL BUILDERS

Sam Farah gave the report for Audrey Gusmano
A sign in sheet was sent around for the April 17 paint in at the Mt Clemens library
Prudy Vannier will teach (date to be announced) and Audrey is working on incorporating with other chapters and setting up a seminar with Sonja Richardson for sometime in 2011.

MEMORY BOXES

Given by Mary Bobrowski
Mary sent boxes to two hospitals in New York
Mary Wiseman and Bonnie Schott will teach memory box paint in after the May meeting.
April 15 is the deadline for the next newsletter.

Kim Eash will take over the position of Sunshine as Fern will be doing a lot of traveling in the near future.

OLD BUSINESS

The club is selling the wooden lids and keytags left over from 2009's Marketplace. Lids are \$2.00 and the keychains are \$1.00

NEW BUSINESS

Sam will be having a paint in at her house on April 9 and 10 for blocks for the Cancer Foundation. A sign up sheet was sent around for members who thought they may be able to attend.

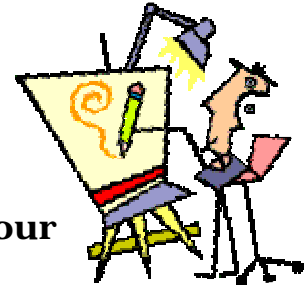
A motion was made to make a donation to the Decorative Artists Museum in Atlanta.
The club was to vote on donating \$100.00.
Jan Heins made the motion to donate \$100, the motion was seconded and approved.
President got a request to paint cards for Paint for Freedom. Robin Harkless will send for cards and members interested can paint them.
There was a request to paint a wall mural for a school in Madison Heights.....No one volunteered.

\$62.00 was collected for Turning Point.
Jan Heins announced there will be a Painting For Bach event at the DIA on April 18.
President, Alice Ochla suggested a trunk sale after the September meeting for members that have old surfaces or items they may want to sell.
Jackie Uhrick was the lucky winner of Paint to Win.

Meeting was adjourned at 11:27.



Education/Painting News....



Painting on our Casual Day with Judy Ribitch – June 12, 2010

We will be painting on the burlap bags provided for us by Sam Farah (thanks Sam!)

Judy Ribitch will instruct us in painting a cute snowman on one side of the well constructed burlap bag. (Note: These bags held peanuts for those with allergies.)

Saturday June 12th 2010 9am to 12:30pm (summer hours)

Mount Clemens Public Library, 150 Cass Ave, Mount Clemens (Between Groesbeck and Southbound M-3 (Gratiot) 586 469 6200

(Park and enter from the rear of the building The Community Room is in the lower level)

Fee: \$10.00 (Teacher and Supplies)

Supplies include: Burlap bag, paint, freezer paper, pattern and directions. "How great is that!"

Members bring: Usual paint supplies, older brushes, stencil brush, flat brush at least 1" wide, scissors, cardboard or poster board 22" x 25" to fit inside bag.

We'll be in need of some irons to iron on the freezer paper pattern and if anyone has some large snowflake stencils to share also. Thanks!

Sign up at the May meeting or send your \$10.00 check (payable to: GLDA) Send by May 31st to:

**Audrey Gusmano
59 S Wilson Blvd.
Mount Clemens MI 48043**

Questions? Call:

Audrey at 586 465 2646 or

Barb Miller at 586 979 5892

Looking forward to another fun day!!!!!!!!!!!!!!

More Education Scheduling News: Mark your Calendars:

Casual Paint Day: Saturday, August 28th 2010

Mount Clemens Library Community Room Summer Hours.....9 am to 12:30 pm

We will paint on the reverse side of the burlap bag (snowman from June paint day.)

This will be the sweet scarecrow design.

Photo will be in the July newsletter.

Members who have already painted this will guide and teach this project. Your option of course, if you chose not to paint this is to paint whatever your heart desires.

The feedback we've received from our Casual Paint Days has been so very positive!

Quotes from our participants have been :

"In this relaxed atmosphere we are getting to know each other better, we're creating new friendships and enjoying painting with no stress around us and at no cost either, just a fun day of painting enjoyment!"

So hope to see new faces whenever you can attend!

Saturday, October 2nd 2010

Mount Clemens Library Community Room Casual Painting Day

9 am to 4:30 pm

"Is it time to begin to think about a painting theme for the upcoming holiday season, gift giving or a winter theme?.....Just planting a thought!" Good day to start....10-2 -10.

UP Coming Seminar.....:

Saturday October 30th 2010

Prudy Vannier will be teaching at GLDA Details and sign up will be in the July Newsletter

"Aren't we blessed to have painting in our lives?" Hugs, Audrey Gusmano

WorksofAud@wowway.com



SUNSHINE

Prayers are requested for Jan Nyland as she continues her treatments for lung cancer.

Kim Eash is our “new” Sunshine Officer. Please let her know if there are any members who are in need of get well messages or sympathy. You may contact her via email at cashfive@att.net or phone her at (586) 786-3087.

We thank Fern for all her years of serving as our Sunshine person - Great Job !! We know you are planning to do some traveling, but do hope we'll see you occasionally.



To: Sandy Bonito....
Another great Lucky Bucks Day! As always we enjoyed the card bingo and the laughter and the nice prizes!!!

We look forward to next year J
Thanks again for a fun day!!

GLDA Membership Directory Updates...

Directory E-mail corrections : for the following members:

Connie Korach
email: conniek24@live.com

Chris Morrison
email: ccmorrison@comcast.net

New Member Introduction

JUDY RIBITCH

Judy was raised in East Detroit. When she was 11, her family moved to Roseville. She is married to Frank and has four children, two boys and two girls. Her oldest daughter is planning a wedding next May. Judy works full time at Lord and Taylor. The merchandising part of her job is what she likes best. She also holds painting classes in her home. Judy started painting 28 to 29 years ago. She paints for herself because she finds it relaxing and enjoys it. In the past, she took painting lessons from Dawn Felton, Mary Wiseman and Mary Lucksted. She began teaching painting 23 years ago at a local craft store. She has had a booth at many Trade Floors, Conventions shows, and has done some craft shows. Judy has designed over one hundred patterns packets. She has taught at Conventions and travel teaches. She just returned from Long Island, New York where she taught her calla lily pattern and a suede table runner. She paints for her family and friends, and donates at conventions and to the chapter. The most interesting place that she has taught at is the New England Traditions convention in Providence, Rhode Island. The women there decorate the entire convention hall to the hilt. The amazing decorations are in every room. The girls out East go all out. They even have hand painted items in the rooms where you paint. Judy doesn't keep many of her pieces, some are sold, others are gifts and some are donated for different causes.

She has many favorite artists. Ginger Edwards and Gretchan Cagle are among them. The piece that she enjoyed painting the most is a 3 foot Santa pattern by John Gutcher. Judy likes to paint on tin or canvas best, but is always willing to try a new surface. Her favorite medium is acrylic even though she started painting in oils.

Judy has been a member of GLDA for about 20 years. Her busy schedule caused her to drop out for a year or two, but now she is back. She enjoys the camaraderie within the club. The reason Judy loves to teach is because of the people she meets. She also cites it as a way to expand with her own painting. She learns something new from other people by teaching. The students always have something different or a creative way of doing something that you may never have thought of.

Memory Box Artist Program™

Touching Lives Through Creativity

The following members donated boxes at the March meeting:

Eileen Carroll	Bob Buszczak	Pat Buszczak (2)	Alice Ochla
Chris Morrison	Robin Harkless	Mary Bobrowski	Vicki Akins
Jan Heins	Maureen Tosto	Jackie Uhrick	Kathy Ziembra
Mary Zabawa (3)			

Boxes were mailed in March to:

Centegra Health System, McHenry, IL
 Crouse Hospital, Syracuse, NY – we received the following Thank You Note

Dear Decorative Artists,

Many special Thanks for the beautiful memory boxes. They are so nice. Please know just how much they mean to our bereaved families. Thanks so much.

Kathy Gorzka, Crouse Hospital

Paint-in after May meeting with Judy Ribitch, Bonnie Schott & Mary Wiseman

The following people signed up at the March meeting – if your name is listed in error or you would like to be added to the list, let me know. Call Mary B. at (248) 375-5539 or email me at mmmsr@aol.com

Vicki Akins	Chris Morrison	Alice Ochla	Bob Buszczak
Pat Buszczak	Maureen Tosto	Jan Heins	Maria Sniezyk
Jan Nyland	Kathy Ziembra	Pat Ehnis	Louise Oles
Florence Gest	Jackie Uhrick	Pat Anderson	Eileen Carroll
Robin Harkless	Tess Missant	Jean Carter	Mary Zabawa

Guidelines:

- Per our usual tradition we will have a May after meeting paint-in. GLDA will provide all boxes.
- Throughout the year, if you have additional painted boxes, I will be happy to collect them at meetings and ship them.
- Please paint and varnish your boxes inside and out.

Thank you everyone for your time and talent! ♥ Mary B.



A Butterfly lights beside us like a sunbeam, and for a brief moment its glory and beauty belong to our world. But then it flies on, and though we wish it could have stayed, we feel lucky to have seen it.



When painting Memory Boxes – you get 5 incentive points. Be sure to note your contribution when you sign in at meetings.



HAPPY BIRTHDAY to you...

MAY

5-12 Louise Oles
5-22 Jackie Sisak

JUNE

6-5 Kim Eash
6-14 Robin Harkless
6-14 Donna Lesko
6-20 Vicki Akins
6-27 Deborah Kinsel
6-30 Bonnie Schott

ARTISTS SPOTLIGHT

By Eileen Carroll



JACKIE UHRICK

Jackie is a new old painter. She considers herself intermediate. She had learned many years ago. She started in oils. Her busy schedule wouldn't permit her much painting time. Since retirement she has more time for painting. In fact, now she paints a lot. She has been a member of GLDA for a few years. You can always see her smiling face at the meetings helping out in the kitchen or wherever she may be needed.

She takes lessons with Mary Wiseman on Tuesday mornings. Jackie paints at home just for fun. She joined the group at Sam's house when we painted the bricks for Breast Cancer Awareness. In fact she brought her friend Barb who she has introduced to painting. She has been teaching Barb to paint. Jackie

has convinced Barb to join us to paint on our next Saturday paint in at the Mt. Clemens Library. Barb will be joining Jackie at the next GLDA meeting and may join us permanently.

Besides painting, Jackie fills her time with babysitting her six grandchildren. They age from one and a half year to six years in age.



As our community service project, each meeting we ask for monetary donations for Turning Point, which Audrey uses to purchase gas cards and then delivers to Turning Point on behalf of GLDA - following is an article from the March, 2010 Turning Point newsletter...

Turning Point Turns 30

In 1980, community activists in Macomb County saw a need for a place where families affected by domestic violence could find safety. A small 14-bed shelter opened in Grace Episcopal Church to ensure that women and children in danger had somewhere to go. This was the first domestic violence shelter in the community and the beginnings of a non-profit agency called Turning Point.

This year, Turning Point marks **30 years of serving our community**. We operate from four locations in Macomb County, including a 41-bed shelter, 24-hour crisis line; counseling and support groups; legal advocacy, prevention education program, youth and family program and forensic nurse examiner program for survivors of sexual violence. Since opening, we have served thousands of people through support services, including providing shelter to over 28,000 women and children.



And a Thank You from Turning Point received February 5, 2010

Dear Ms. Gusmano,

*On behalf of our Board of Directors and the staff who work with survivors every day, **thank you** all for the very generous gift of Meijer gas cards, valued at \$100. Your gift will help many families struggling to find basic safety in their lives. Its arrival could not have been timelier as we are all weighing how this struggling economy will affect our efforts to provide safety to women and children forced to leave their homes due to violence.*

This year, Turning Point will mark our 30th anniversary of serving our community. Since opening over 25,000 women and children have been sheltered at Turning Point. Last year, Turning Point served 3,100 individuals and answered 11,108 crisis calls. We provided emergency shelter to 476 women and children, yet were unable to meet 2,200 requests for shelter, an alarming statistic that reflects the dire need in our community.

We are very excited about our new partnership with MSU where we will be evaluating our services and testing promising practices in our field. We are also continuing our prevention education work in schools and the community. Last year we reached over 10,000 youth in Macomb County. We can celebrate much progress, but will continue our work until no family has to leave their home to find safety. Your support will help us maintain our progress toward ending domestic and sexual violence. Again thank you for this generous gift and continued confidence in Turing Point.

Sincerely,

*Suzanne Coats
President and CEO*

Village Painters proudly presents
Two one-day seminars for Beginner to Advanced OIL painters with

Shirley Nan Ruchong, CDA, MDA: Floral

Elected to SDP Board of Directors 2009/11; Taught at SDP and HOOT; Published in Decorative Painters Magazine www.shirleynanruchong.com



Tulip - OIL



Gerbera Daisy - OIL

When: Saturday, July 17, 2010

Sunday, July 18, 2010

Where: Livonia Senior Center
 15218 Farmington Road
 Livonia, MI 48154

Pot-luck lunch – please bring a dish to pass. Beverages provided.

Time: 9:00 am – 4:00 pm

Oil paint is provided.

Surface: \$20 each; base-coated with pattern on.

Or order directly from Catalina Cottage and prep it yourself.

Primed metalware square scalloped tray 12 inches; center is 7 inches

Cost: Members: \$45.00 each day
 Non-Members: \$60.00 each day

Registration March 15 – May 30

Registration April 15 – May 30

Please remember that all fees are non-refundable. A waiting list will be maintained.

Contact Diane Stiller (313) 832-1058 or dianestiller@sbcglobal.net if you have questions or cannot attend.

Shirley Nan Ruchong Seminar – July 17 and 18, 2010

Name _____ Address _____ City _____ Zip _____ Phone # _____ Email _____	<table style="width: 100%; border-collapse: collapse;"> <tr> <td colspan="2" style="text-align: center;">Tulip, Saturday, July 17</td> <td style="text-align: right;"><u>Amount</u></td> </tr> <tr> <td style="text-align: center;">Member \$45</td> <td style="text-align: center;">NonMember \$60</td> <td style="text-align: right;">_____</td> </tr> <tr> <td colspan="2" style="text-align: center;">Gerbera Daisy, Sunday, July 18</td> <td></td> </tr> <tr> <td style="text-align: center;">Member \$45</td> <td style="text-align: center;">Non Member \$60</td> <td style="text-align: right;">_____</td> </tr> <tr> <td colspan="2" style="text-align: center;">Surface: Quantity _____ x \$20 each</td> <td style="text-align: right;">_____</td> </tr> <tr> <td colspan="2" style="text-align: right;">Total enclosed</td> <td style="text-align: right;">_____</td> </tr> </table>	Tulip, Saturday, July 17		<u>Amount</u>	Member \$45	NonMember \$60	_____	Gerbera Daisy, Sunday, July 18			Member \$45	Non Member \$60	_____	Surface: Quantity _____ x \$20 each		_____	Total enclosed		_____
Tulip, Saturday, July 17		<u>Amount</u>																	
Member \$45	NonMember \$60	_____																	
Gerbera Daisy, Sunday, July 18																			
Member \$45	Non Member \$60	_____																	
Surface: Quantity _____ x \$20 each		_____																	
Total enclosed		_____																	

Make check payable to: Village Painters

Mail to: Diane Stiller, 674 W. Canfield, Detroit, MI 48201

For education use only: Payment received on: _____
 Amount received: _____ How Paid: _____

GLDA
March 13, 2010



Lucky Bucks BINGO



After Meeting Painting
by Mary Bobrowski



2010 GREAT LAKES DECORATIVE ARTISTS MEMBERSHIP



NAME: _____
Last First Middle

PHONE () _____ Cell # () _____

ADDRESS _____

CITY _____ STATE _____ ZIP _____

COUNTRY _____ E-MAIL _____
(If not USA)

BIRTHDATE: MONTH _____ DAY _____

SDP# _____ YEAR JOINED GLDA _____ NEW _____ RENEWAL _____

CHECK ALL THAT APPLY:

<input type="checkbox"/> STUDENT	<input type="checkbox"/> CDA	<input type="checkbox"/> OILS	<input type="checkbox"/> BEGINNER
<input type="checkbox"/> TEACHER	<input type="checkbox"/> MDA	<input type="checkbox"/> ACRYLICS	<input type="checkbox"/> INTERMEDIATE
<input type="checkbox"/> SHOP OWNER	<input type="checkbox"/> ASSOCIATE	<input type="checkbox"/> WATERCOLOR	<input type="checkbox"/> ADVANCED

I give my permission to print my pictures and address/phone numbers for the member directory, newsletter and website.

FEE: INDIVIDUAL - \$15.00 FAMILY - \$20.00 Make check payable to GLDA

Please enclose a copy of your 2010 SDP Membership Card (if paying in person, show your card to Pat)

SEND TO: **Pat Anderson 73710 Floral Armada, MI 48005**

Mary Bobrowski
 GLDA NEWSLETTER
 375 Huntington Ct.
 Rochester Hills, MI 48307

GREAT LAKES DECORATIVE ARTISTS
gldartists@aol.com
www.greatlakesdecorativeartists.com